



Big Dutchman®



UNIVENT Starter

Manure belt battery cages
for rearing pullets

UNIVENT Starter – Battery cage

With the UNIVENT Starter rearing battery cage from Big Dutchman you choose to go the right way, because UNIVENT Starter not only stands for excellent rearing results but also for excellent system quality.

To meet varied requirements of all our customers in an ideal way, we offer UNIVENT Starter with or without ventilation.

To satisfy the different needs of day-olds and pullets, our rearing battery cages consist of two different areas:

- the start tier and
- the grow tier.

Quality and uniformity of pullets are crucial factors which later influence their laying performance. Hence, the essential criteria for a successful rearing period are:

- uniform feed supply;
- rapid feed distribution;

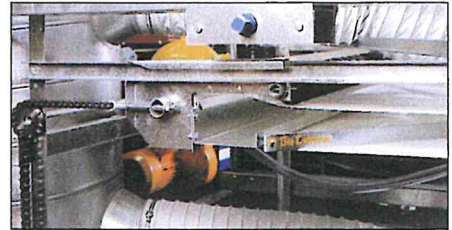
- no manure in feed trough positioned outside the cage;
- sufficient and hygienic drinking water;
- wire partitions for improved bird control;
- high functional reliability;
- easy to operate;
- reduction of ammonia emissions.

Manure drying:

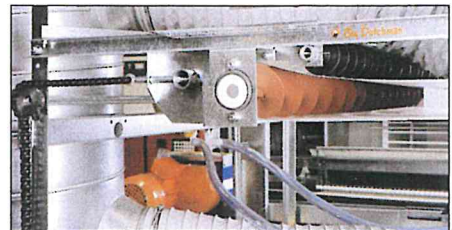
Air is channelled, via air ducts, into the individual cages, to the birds and the manure. Fresh air can be warmed up with an air mixer (mixing fresh air with house air) or heat exchanger. Both systems are controlled automatically. This additional ventilation aids in bird comfort and more uniform temperature throughout the house.

Manure belt idler unit:

In addition to the standard system, Big Dutchman offers a cleaning auger, which also cleans the manure belt during its return circuit.



Idler roller for manure belt (Standard)



Idler roller for manure belt with cleaning auger

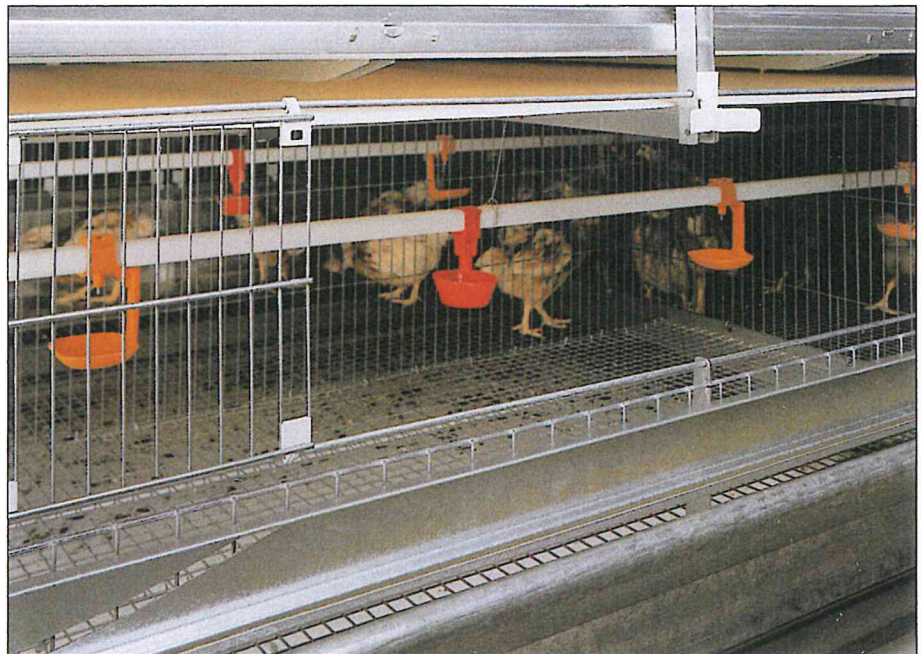
The start tier

Two thirds of each of the two large sliding doors per cage compartment can be opened. This is an important advantage when the birds have to be moved in, out, or to other cages. Bottoms have a mesh size of 1" x 1 1/2" (25 x 38 mm; both start and grow tiers) which, with an insert mat, ensures a secure foothold for the chicks (especially during their first days of life). Cleaning is fast and easy.

Feed supply

The chicks can easily reach the feed in the trough positioned outside of the cage from day one. The most important advantage of this is that the chicks can reach the feed without standing in it. By means of the adjustable rail, access to the feed is easily controlled centrally and continuously according to the birds' age. The inner rim of the trough prevents feed waste.

The Big Dutchman CHAMPION feed chain distributes feed rapidly, reliably and uniformly to each tier. The feed level in the trough can easily be adjusted with the slide adjustment at the feeder.



Start tier of UV-S 630 with open round cup for easy water intake during the first days of rearing

Water supply

The nipple drinker line in the start tier can be adjusted in height centrally according to the size of the birds. Thus, an adequate water supply is provided from day one. The drinker line is suspended every 60 cm (23.63 inches) ensuring good stability. In the standard version, there are 3

nipples with drip-water cup in each cage. Upon request, the number of nipples/cage can also be increased. The central cup can be detached and replaced by an open round cup. This makes drinking easier for the chicks during their first days of life.

uniform pullets and dry manure



Start tier with continuous eating aperture and inner trough rim against feed losses

Advantages

- simple assembly of 3 to 8 tiers;
- feed troughs are mounted on supports for trough stability and long service life;
- feed trough with inner rim provides minimal feed losses;
- upper walkway for batteries with more than 5 tiers = easy bird control;
- better thermal economy (reduced heating expenses and reduced investment costs per bird) is achieved with systems of 4 or more tiers due to increased density;
- remarkably low bird mortality during rearing.

The grow tier

After approx. 6 weeks, the pullets are distributed evenly to all tiers of the battery. UNIVENT Starter is also available with start only on all tiers. As an option, Big Dutchman offers a step system that is built into the feed troughs.

Feed supply

The birds eat directly from the feed trough. The adjustable rail in the start tier should be at the very bottom, so that pullets eat over the rail until they are moved out during their 18th week of life. The speed of the feed chain can either be 12 or 36 m/min (39.3 or 11.8 ft/min). The result is impressive: uniform growth among the pullets!

Water supply

In grow tiers the nipple drinker is installed at the back wall of the cage where each bird can easily reach four stainless steel nipples. We also recommend using a rinsing system with a ball tank.



Grow tier UV-S 630 – four stainless steel nipples provide fresh water for the birds

Manure removal

The manure drops on continuous PP belts underneath the cages. Air reaches the manure via air ducts, which are located above the manure belts, to assist with manure drying. A very important advantage of

manure drying is that ammonia emissions in the house are significantly reduced. This minimises any harm to the environment, promotes the birds' well-being and reduces mortality.

Technical data

Typ of system

System height (X) in mm / inch

3 tiers	1990	78.4	2110	83.1
4 tiers	2580	101.6	2740	107.9
6 tiers	3960	155.9	4200	165.4
7 tiers	4550	179.2	4830	190.2
8 tiers	5140	202.4	5460	215.0

Tier distance (V) in mm / inch

590	23.3	630	24.8
-----	------	-----	------

Height 1st tier (W) in mm / inch

390	15.4	420	16.6
-----	------	-----	------

Battery width (Y) in mm / inch

1700	66.9	1700	66.9
------	------	------	------

Cage depth (Z) in mm / inch

680	26.8	630	24.8
-----	------	-----	------

Cage height (T) in mm / inch

405	16.0	415	16.3
-----	------	-----	------

Cage length in mm / inch

1206	47.5	1206	47.5
------	------	------	------

Cage surface (cm²) / square inch

8200	1271	7598	1178
------	------	------	------

Birds/cage

* with 250 cm ² /bird	30	28
----------------------------------	----	----

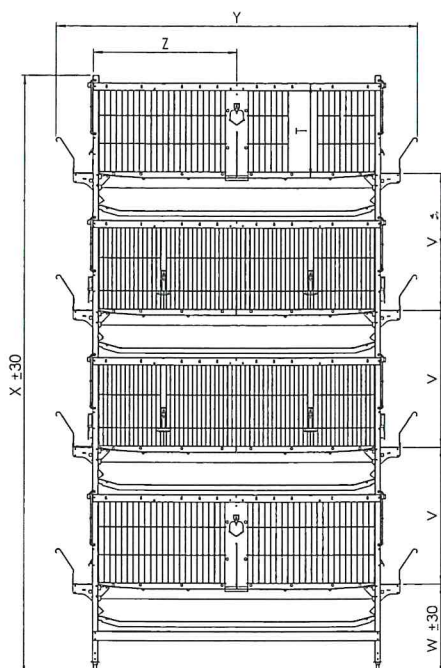
* with 300 cm ² /bird	27	25
----------------------------------	----	----

* with 330 cm ² /bird	25	23
----------------------------------	----	----

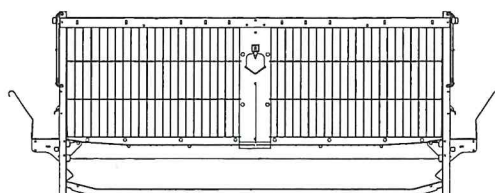
Rows/Passage in cm / inch

* when house is 12 m wide	4/104	4/40.9	4/104	4/40.9
---------------------------	-------	--------	-------	--------

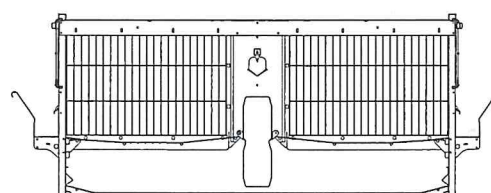
* when house is 14 m wide	5/91.7	5/36.1	5/91.7	5/36.1
---------------------------	--------	--------	--------	--------



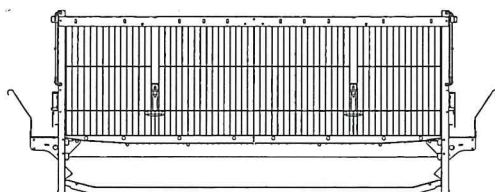
Cage cross sections



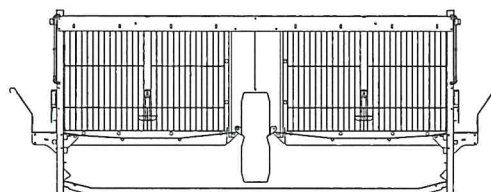
UV-S 680 - Grow tier without air duct



UV-S 630 A - Grow tier with large air duct



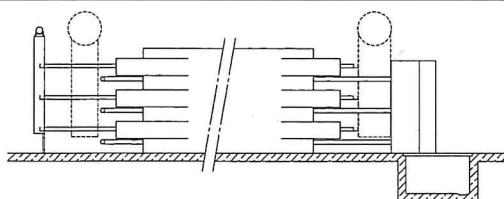
UV-S 680 - Start tier without air duct



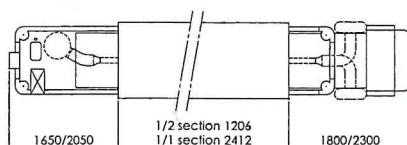
UV-S 630 A - Start tier with large air duct

Planning example UV-S 630 A

Side view



Top view



Our recommendation:

Compatibility among the individual components of a pullet house including cages, house ventilation and manure storage is essential to achieve optimal results.

Allow our specialists to advise on application of Big Dutchman equipment and technology to successfully manage flocks.

Asia

BD Agriculture (Malaysia) Sdn. Bhd.

No. 20, Lorong Keluli 1 B,
Kawasan Perindustrian Bukit Raja,
Seksyen 7, 40000 Shah Alam,
Selangor Darul Ehsan · Malaysia
Tel. +60-3-33 61 5555 · Fax +60-3-33 42 2866
e-mail: bdasia@bigdutchman.com

USA

Big Dutchman, Inc.

3900 John F. Donnelly Dr.
Holland, MI 49422 · USA
Tel. +1-616-392-5981 · Fax +1-616-392-6899
e-mail: bigd@bigdutchmanusa.com



Big Dutchman.

Germany

Big Dutchman International GmbH

P.O. Box 1163 · 49360 Vechta · Germany
Tel. +49(0)4447-801-0
Fax +49(0)4447-801-237
e-mail: big@bigdutchman.de